



# B.K. BIRLA CENTRE FOR EDUCATION

SARALA BIRLA GROUP OF SCHOOLS  
A CBSE DAY-CUM-BOYS' RESIDENTIAL SCHOOL



## TERM-1 EXAMINATION (2025-26) SOCIAL SCIENCE

Class: V

Date: 12/09/2025

Admission no:

Time: 3Hrs.

Max Marks: 80

Roll no:

### INSTRUCTIONS:

1. The question paper consists of five sections (A, B, C, D & E) with 28 questions in total.
2. All questions are compulsory.
3. Question numbers 1-7 are multiple choice questions.
4. Question number 8 is True and False, Q9 is Match the column, Q10 is Name the following and Q11 is picture based question.
5. Question numbers 12 to 19 are of 3 marks each. Answers to these questions should not exceed 20-30 words each.
6. Question numbers 20 and 23 are of 4 marks each. Answers to these questions should not exceed 50-60 words each.
7. Question number 24 is a long answer question of 5 marks.
8. Question number 25 to 28 are Case based, carrying 4 marks.

### SECTION-A

Choose the correct option

1. Which means of communication can help us quickly send messages to multiple people in an emergency? 1  
a. Radio                      b. Postcard                      c. Letter                      d. None of the above
2. What is the movement of Earth on its axis called? 1  
a. Revolution                      b. Rotation                      c. orbit                      d. Equator
3. The 0° latitude is known as \_\_\_\_\_. 1  
a. Prime Meridian                      b. Equator                      c. Tropic of Cancer                      d. Arctic Circle
4. The water cycle involves processes such as evaporation, condensation, precipitation, and \_\_\_\_\_. 1  
a. Respiration                      b. Collection                      c. Sea water                      d. Photosynthesis
5. Which region has a hot and heavy rain climate throughout the year? 1  
a. The temperate grasslands                      b. The tundra  
c. The equatorial region                      d. The hot deserts
6. What is the name of the permanently frozen soil found under the top layer of melted snow? 1  
a. Ice cap                      b. The tundra                      c. Permafrost                      d. Snowfield
7. What is the climate of the Tundra? 1  
a. Hot                      b. very hot                      c. Extremely cold                      d. Neither hot nor cold.

8. State true or false.

0.5X6=3

- a. The equator divides Earth into the Eastern and Western Hemispheres.
- b. The South Pole is the northernmost point of Earth's axis.
- c. Earth takes 24 hours to complete one rotation.
- d. Cacti have thick stems and spines to store water.
- e. Air pollution is caused by loud noises from construction work.
- f. The English East India Company came to India in the year 1856.

9. Match the following:

0.5X4=2

A

- a. Water pollution
- b. Rani Lakshmibai
- c. Tropic of Cancer
- d. Grassland

B

- i. Northern Hemisphere
- ii. Breadbasket of the world
- iii. Jhansi
- iv. oil spill

10. Name the following

- a. Type of water transport that help transport people and goods through seas and ocean. 1
- b. Type of pollution increases due to burning fossil fuels. 1
- c. The movement of the Earth around the Sun. 1

11. Look at the picture and answer the questions.

a.



- i) What is happening in the picture? 1
- ii) Why do you think people are buying British cotton? 1

b.



- i) Which Domains seen in the picture? 1
- ii) Do you think the domains shown here are safe for living things? Why? 1

## **SECTION-B**

Answer the questions.

- |   |   |
|---|---|
| 12. Differentiate between latitudes and longitudes.             | 3 |
| 13. Write different types of temperature zones and its climate. | 3 |
| 14. How does rotation cause day and night?                      | 3 |
| 15. What is the atmosphere? Why is it important for life?       | 3 |
| 16. Describe the life of people in the hot desert.              | 3 |
| 17. How does air pollution harm living things?                  | 3 |
| 18. Why were the weavers not happy with the British?            | 3 |

**OR**

Why did the British make changes for forest communities, and what changes did they make?

19. Rahul is super excited—he's planning a trip to three different places, and he needs your help to figure out the best modes of transport for each!

Can you identify the most suitable way for him to travel to each place?

- |   |   |
|---|---|
| i. Rahul is flying to a city in another country. What should he take?   | 1 |
| ii. Next, he's heading to a hill station nearby for some cool mountain air. How should he get there?            | 1 |
| iii. Finally, he wants to visit his grandmother's village across the river. What will help him cross the water? | 1 |

## **SECTION-C**

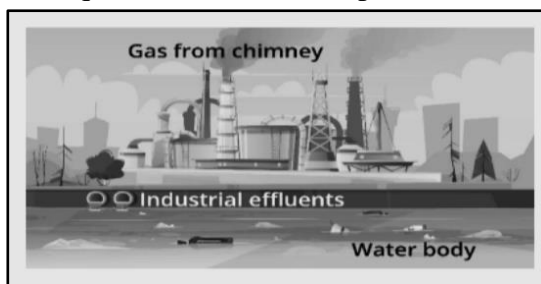
Long answer questions.

20. How does personal communication differ from mass communication? State the difference between the two by providing an example of each. 4

**OR**

Create a colourful flowchart to explain the different modes of transport. Use simple drawings to show how they are grouped and examples of each.

21. What is the equator? What are two parts that it divides Earth into? 4



22. What is soil pollution? Write two ways in which it affects the environment? 4

**OR**

Based on the picture given, describe how the environment is being harmed.

23. What are the problems faced by soldiers during British rule? 4

## **SECTION-D**

24. Draw a neat and labelled diagram of the Earth showing the important lines of latitude. Explain the significance of these latitudes. 5

**OR**

Draw a neat and labelled diagram of the Earth showing the three main temperature zones. Explain each temperature zone in brief.

## **SECTION-E**

### **Case Study:**

25. It was Riya's birthday. Her cousin Aarav came from another state by train. Meena sent a video message to wish her. In the evening, Riya's father took everyone by car to a lake. The town also had bicycles, buses, and a ferry boat to cross the river.

#### **Answer the questions:**

- |  |   |
|--|---|
| 1. Which mode of transport did Aarav use?  | 1 |
| 2. What type of communication did Meena use?                                       | 1 |
| 3. Why might ferry boats be useful in Riya's town? What type of transport is this? | 2 |

26. Rohan went on a school trip to Eco Park, where he observed the beauty of nature all around. He saw a blue lake nestled near green hills. Birds were flying freely in the sky, and he noticed fish swimming in the clear water.

#### **Based on Rohan's experience, answer the following questions:**

- |  |   |
|--|---|
| 1. The green hills that Rohan saw are part of which domain of the Earth? | 1 |
| 2. The fish swimming in the lake belong to which domain?                 | 1 |
| 3. When birds fly in the sky, which two domains are involved?            | 2 |

27. In Sunny Village, people throw garbage into the river, and many trees have been cut down. Some children start planting new trees near the school.

#### **Answer the questions**

- |  |   |
|--|---|
| 1. Name one way people are harming the Earth in Sunny Village. | 1 |
| 2. How are the children helping the Earth?                     | 1 |
| 3. Suggest any two ways to keep the village clean and green.   | 2 |

28. The British initially arrived in India in 1608 with the purpose of trade. Over time, their ambitions grew. A major turning point came with their victory in the Battle of Plassey in 1757, after which they started establishing control over Indian territories. Finally, in 1858, following the events of the Revolt of 1857, India officially came under the British Crown, marking the beginning of direct British rule.

#### **Based on the passage above, answer the following questions:**

- |  |   |
|--|---|
| 1. In which year did the British first arrive in India, and why?                         | 1 |
| 2. Which battle marked the beginning of British rule in India?                           | 1 |
| 3. What significant change took place in <b>1858</b> regarding British control in India? | 2 |

\*\*\*\*\*ALL THE BEST\*\*\*\*\*